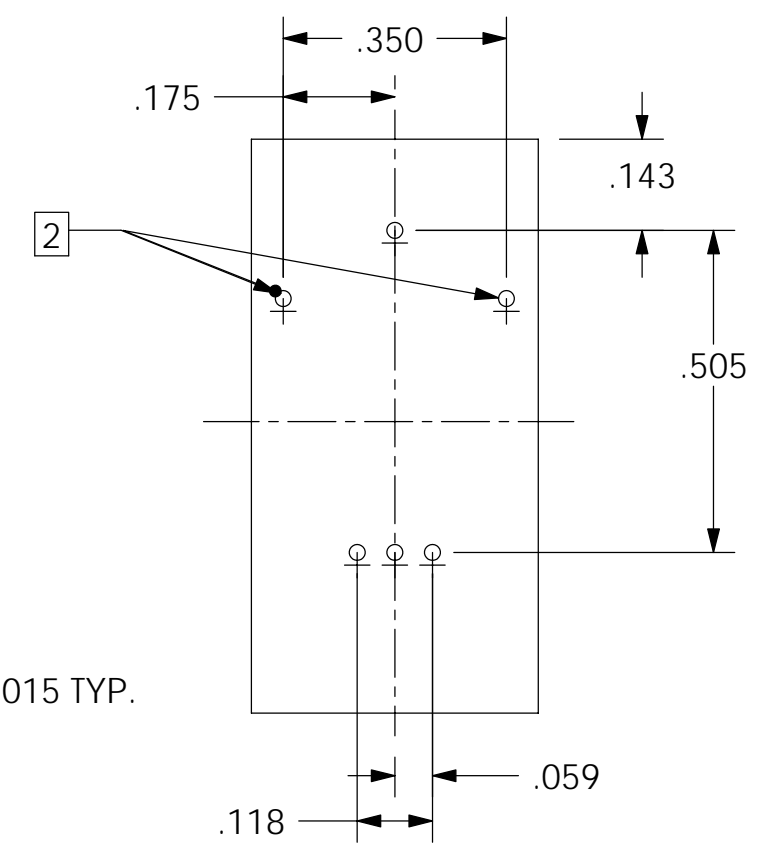
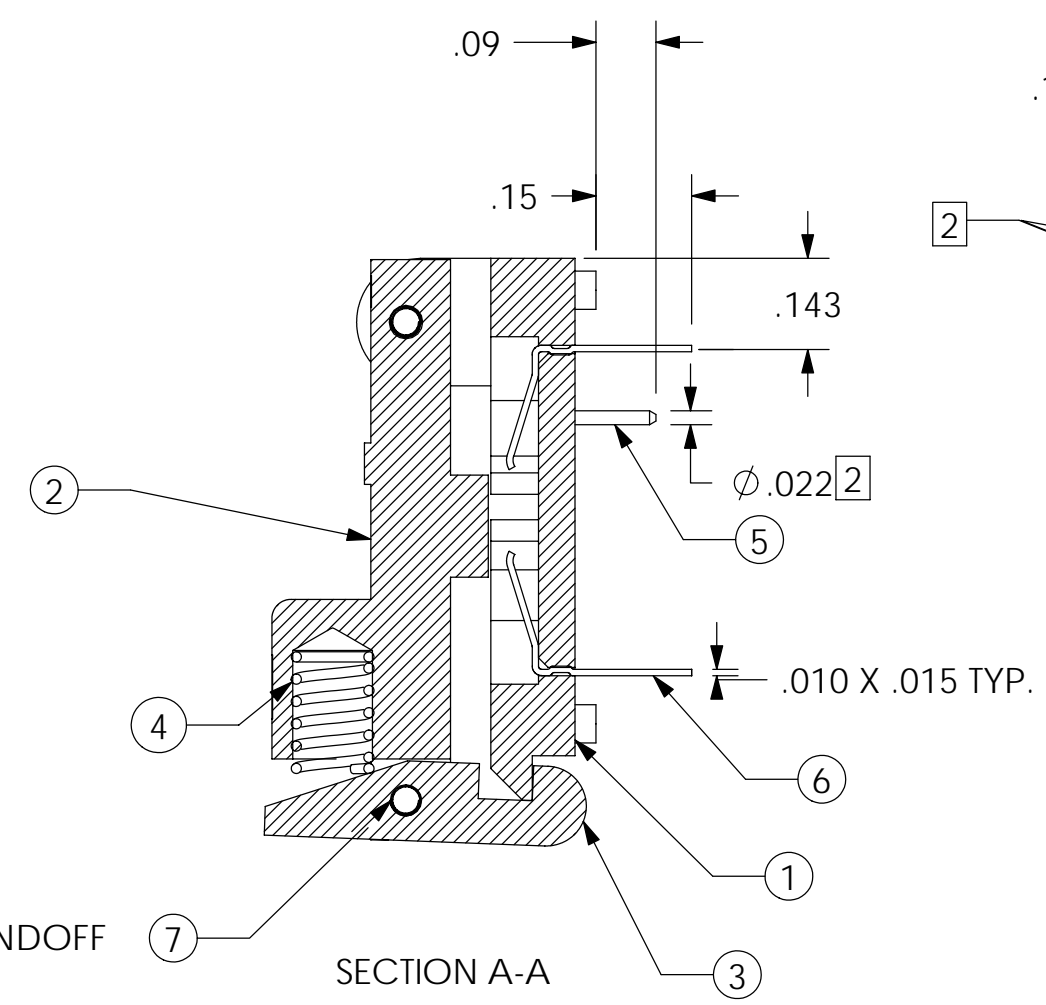
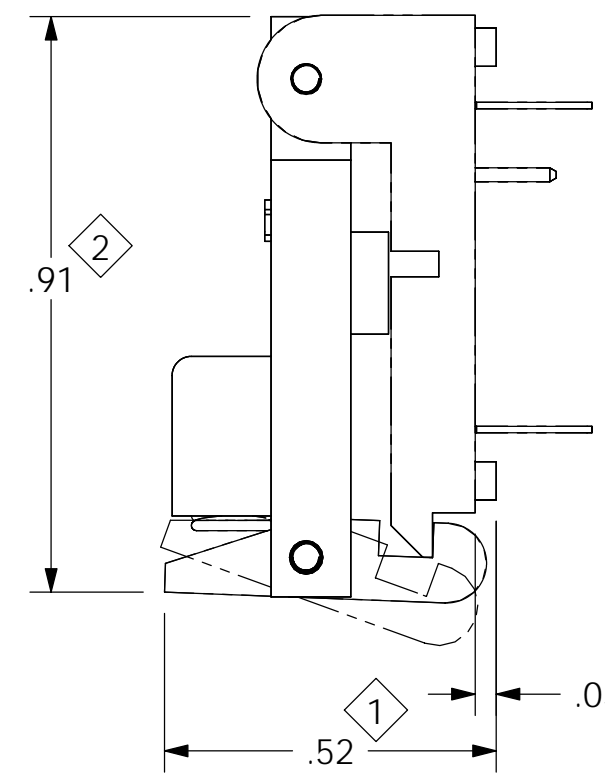
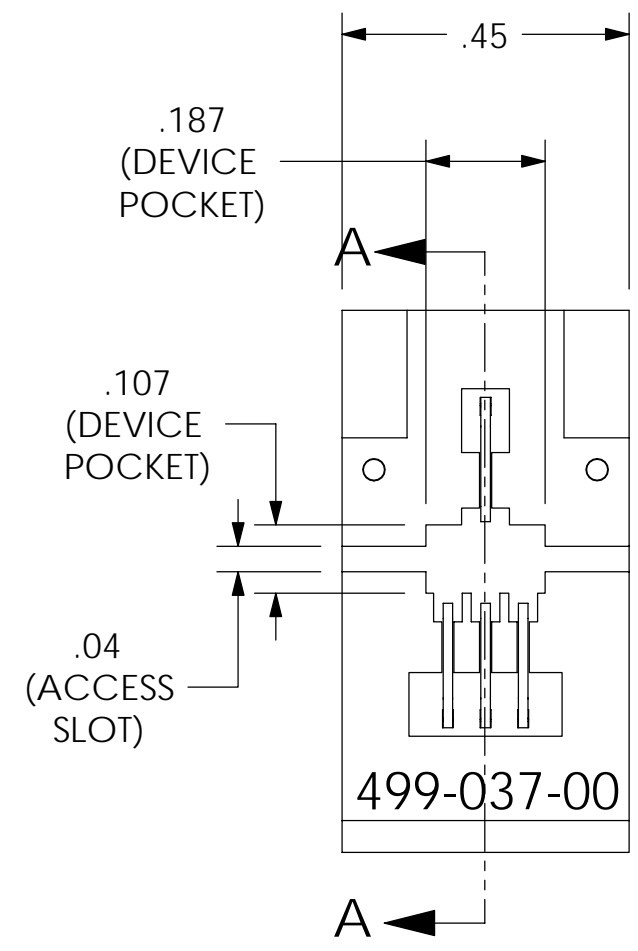


REVISIONS				
REV	ECN	DESCRIPTION	DATE	BY
A	06-0102	RELEASED FOR PRODUCTION	2/10/2006	DS



FOOTPRINT
FOOTPRINT SHOWN LOOKING DOWN THRU SOCKET

7	2	099-060-10	SPIRAL PIN
6	4	002-053-02	CONTACT
5	2	003-031-01	CONTACT PIN
4	1	005-017-00	SPRING, COMP., .120IN. O.D., .250IN. LEN.
3	1	001-338-00	LATCH
2	1	001-337-21	LID
1	1	001-336-30	BASE
ITEM NO.	QTY.	PART NUMBER	DESCRIPTION

2 HOLES FOR MIL-MAX CONTACT PIN.
1 MATERIAL & FINISH:
BODY, LID, LATCH - PPS, AS MOLDED
CONTACTS - PFINODAL, Au PLATING

LEGEND		THIS DOCUMENT CONTAINS PROPRIETARY INFORMATION THAT IS THE SOLE PROPERTY OF WELLS-CTI. THIS INFORMATION IS TO BE HELD BY ITS RECIPIENT ON A CONFIDENTIAL BASIS, AND IS NOT TO BE DISCLOSED TO OTHERS OR USED WITHOUT WRITTEN CONSENT OF WELLS-CTI.	MATERIAL / FINISH	DRAWN	DATE	
◇	CRITICAL		1	DS	2/10/06	
2	TOTAL NO. OF ◇ USED		REFERENCE	GR	2/10/06	
SIZE	PROJECTION	PROJECT / SERIES	ENGINEER	DATE	PART NAME	
B		499	DS	2/10/06	SOCKET ASSEMBLY (SOT-89)	
DO NOT SCALE		TOLERANCES	ENG. SUPRV.	DATE	PART NUMBER	REV.
		X.X ± 0.1	MFG. ENGR.	DATE	499-P37-20	A
		X.XX ± 0.01			SCALE 3:1	UNITS:in [mm]
		X.XXX ± 0.005			CAD NUMBER	SHEET 1 OF 1
		ANGLE ± 1°			499-P37-20.SLDDRW	