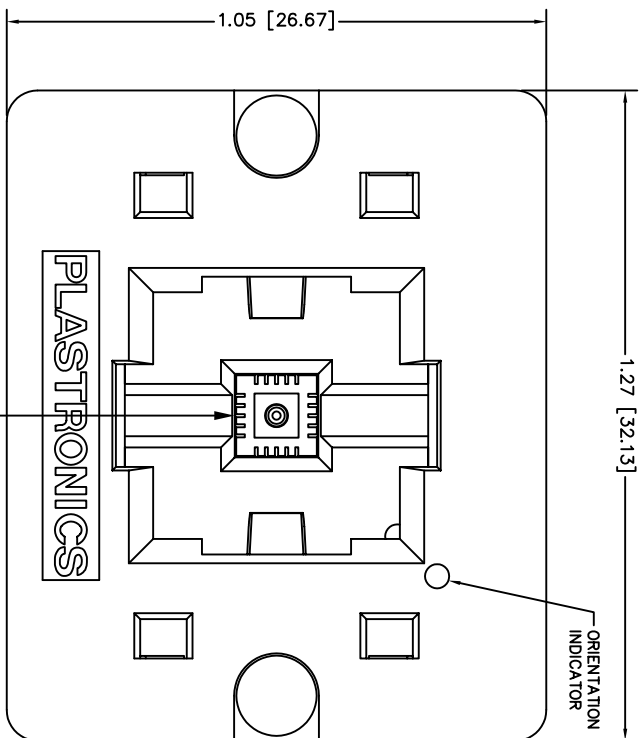
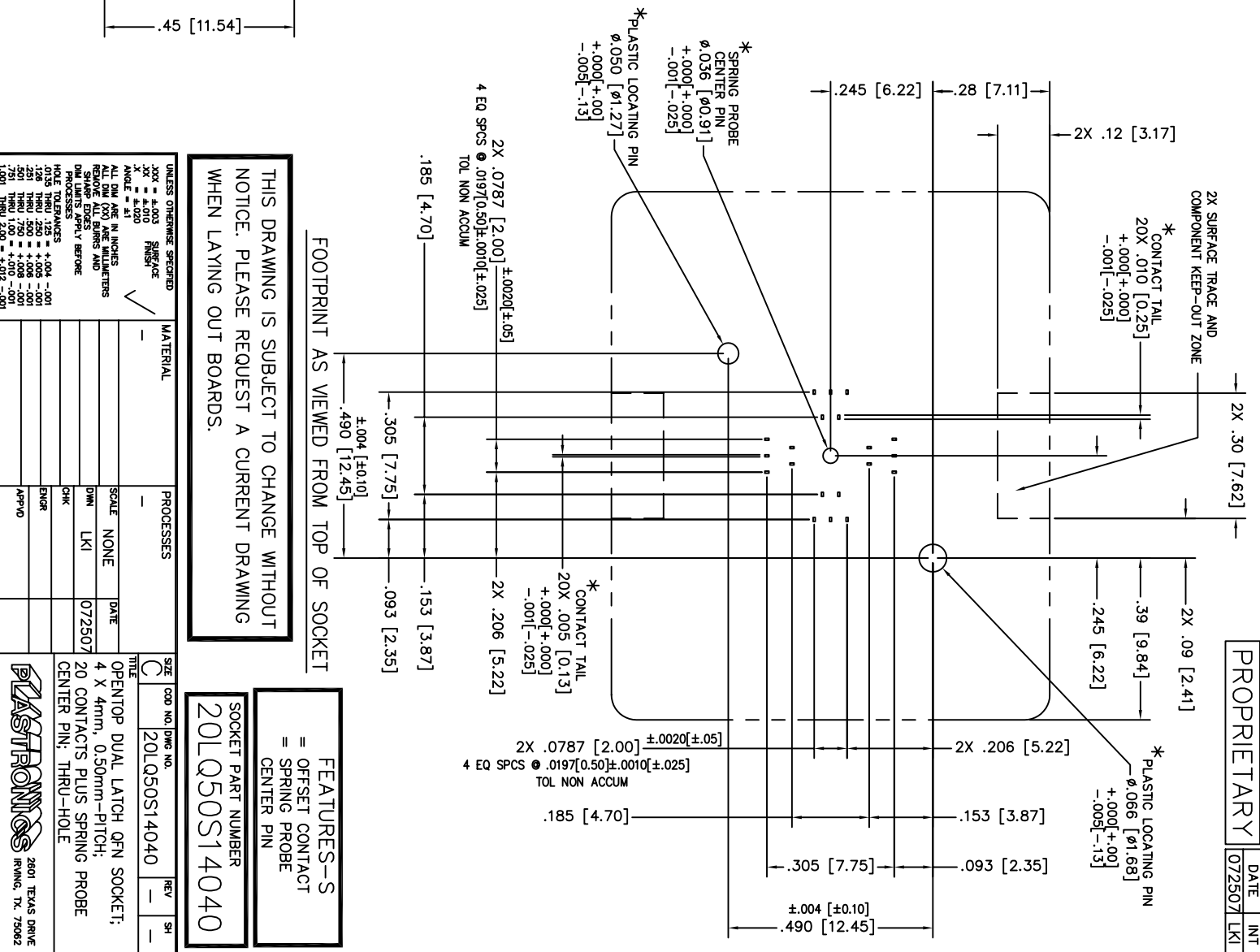
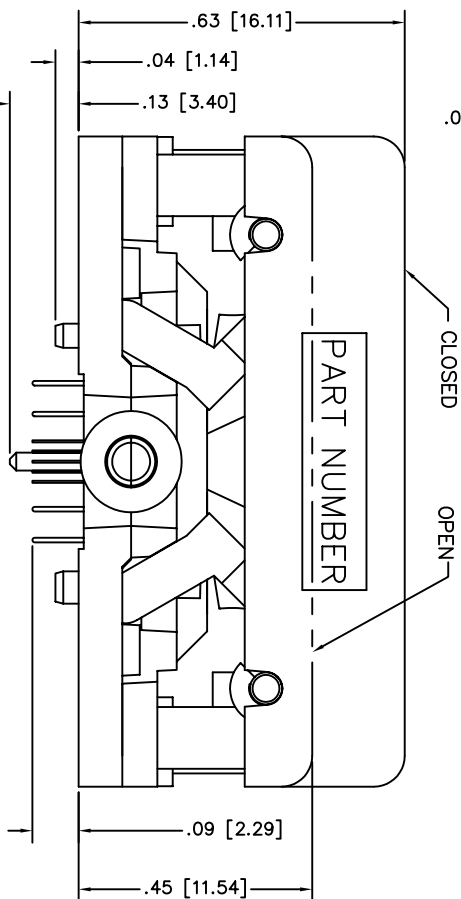
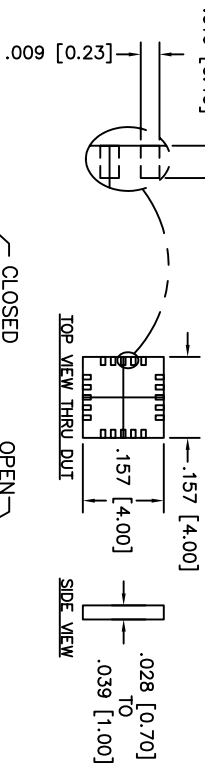


**NOTE : * DIMENSION OF SOCKET FEATURES SHOWN.
BOARD DESIGNER SHOULD SELECT APPROPRIATE HOLE
SIZES TO PROVIDE A SLIP FIT FOR THESE FEATURES.**



NEST SIZE AND CONTACT POSITIONS SHOWN:
NON-FUNCTIONAL SURFACES FOR REPRESENTATION ONLY



THIS DRAWING IS SUBJECT TO CHANGE WITHOUT
NOTICE. PLEASE REQUEST A CURRENT DRAWING
WHEN LAYING OUT BOARDS.

UNLESS OTHERWISE SPECIFIED
X.XXX = ±.003 SURFACE FINISH
XX = ±.010
X = ±.015
ANGLE = 45°
ALL DIM ARE IN INCHES
ALL DIM (X) ARE MILLIMETERS
DIM TOL. ARE APPL'Y BEFORE
DOWEL PINS APPL'Y BEFORE
MATERIAL PROCESSES
DATE: 07/25/07
APP'D: [Signature]

SIZE	CODE NO./DWG NO.	REV	SH
C	20LQ50S14040	-	-
DATE	07/25/07		
SCALE	NONE		
DWG	LKI		
DATE	07/25/07		
CHK			
ENGR			
APP'D			

FEATURES-S
= OFFSET CONTACT
= SPRING PROBE
= CENTER PIN

SOCKET PART NUMBER
20LQ50S14040

OPENTOP DUAL LATCH QFN SOCKET:
4 X 4mm, 0.50mm-PITCH;
20 CONTACTS PLUS SPRING PROBE
CENTER PIN; THRU-HOLE

PLASTRONICS
2801 TEXAS DRIVE
IRVING, TX 75062

PROPRIETARY
DATE: 07/25/07
INT: LKI