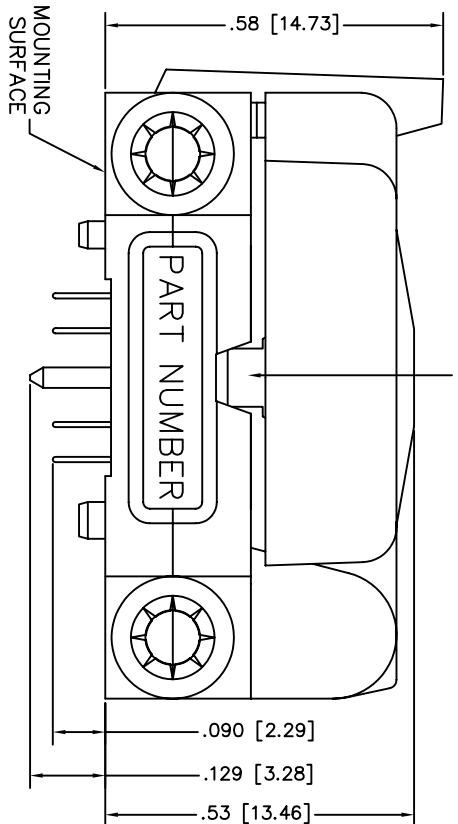
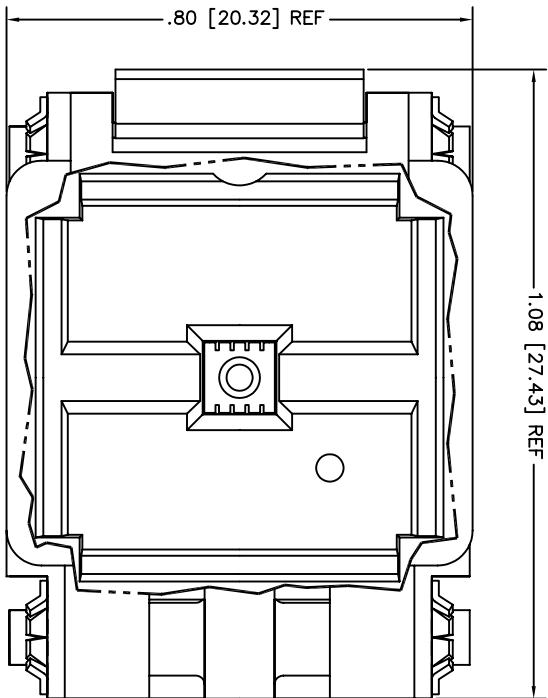
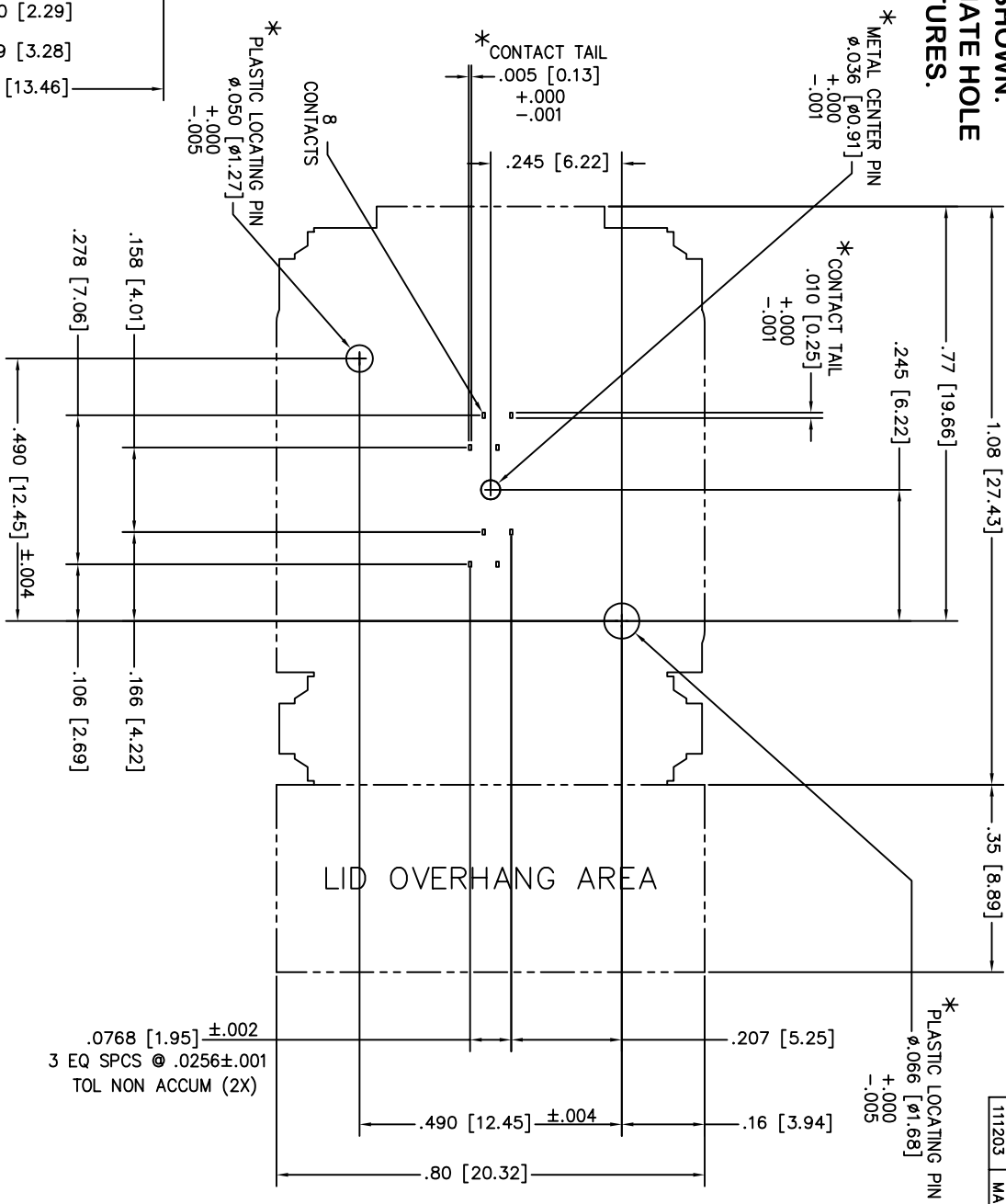


**NOTE : * DIMENSIONS OF SOCKET FEATURES SHOWN.
BOARD DESIGNER SHOULD SELECT APPROPRIATE HOLE
SIZES TO PROVIDE A SLIP FIT FOR THESE FEATURES.**



PLUNGER IS .100 [2.54] X .100 [2.54]
FOR A .028 [0.70] - .039 [1.00] THICK DEVICE



FOOTPRINT AS VIEWED FROM TOP OF SOCKET

FEATURES-T

= STANDARD FOR .3mm LONG
NOMINAL PAD

PROPRIETARY

PART NUMBER
08QN65T33030

SIZE C DWG NO. 08QN65T33030 SH 1/1

UNLESS OTHERWISE SPECIFIED
XXX = ±.003 SURFACE
XX = ±.010 FINISH
X = ±.020
ANGLE = 45°
ALL DIM ARE IN INCHES
ALL DIM (Ø) ARE MILLIMETERS
REMOVE ALL BURS AND
SHAPE EDGES

SCALE	NONE	DATE
DWN	LKI	082903
CHK	MAA	082903
ENGR		
APP'D		

TITLE
QFN SOCKET;
3 x 3mm, 0.65mm-PITCH;
8 CONTACTS PLUS CENTER PIN;
THRU-HOLE

ASTRONOS 2801 TEXAS DRIVE
IRVING, TX 75062

DATE	INT
11/20/03	MAA

THIS DRAWING IS SUBJECT TO CHANGE WITHOUT
NOTICE. PLEASE REQUEST A CURRENT DRAWING
WHEN LAYING OUT BOARDS.